



Gordon's School History Department



GCSE- Curriculum Map - Elizabethan England and Migration, Empire and People / America and the Cold War

Exam Words:
Explain, evaluate, importance, account, useful, convincing, causation, consequence, change, continuity, similarity, difference, significance.



Mock on Cold War and Russia (in class)

Revision on Elizabeth for 1.5 weeks

Brezhnev's USSR:
How Brezhnev's actions over Prague re-ignited the Cold War.

Détente:
Why the East and the West decided to bring the Cold War to a close.

Causes of the Cold War:
Differences between communism and capitalism, how did the world move from the end of World War Two to the Cold War?

Development of the Cold War:
Increased tensions in the 1950s.

Intensification of the Cold War:
The Berlin Crisis and its resolution.

BC: Conflict and tension between East and West, 1945-1972

Year 11 mocks: Elizabeth and Migration

Re-cap of the Historic environment (TBC every year) for unit 1 Elizabeth:
AQA will provide an historic place of interest to Elizabethan England which will form the basis of this unit and the 16-mark exam question that will accompany it.

AD: America, 1920-1973

Year 11

Britain and Europe: EU membership and the positives and negatives to Britain's relationship with Europe.

The final hurrah for the Empire: Why Britain fought to keep the Falkland Islands near Argentina and why this mattered both in the 1980s and now.

The Impact of an Empire and multicultural Britain: How Britain's Empire has resulted in a diverse country today.

The boom of the 1920s:
Republican policies, Ford and the motor industry, inequalities of wealth.

Divisions within society:
Prohibition, racial tension, impact of immigration.

Roosevelt's New Deal:
What measures were introduced and how effective were they?

American society and economy after 1945:
Consumerism, the 'American Dream', popular culture and McCarthyism.

Social and cultural developments:
Entertainment, the changing position of women within society.

Impact of the Great Depression, 1929:
How were different sectors of the economy affected? President Hoover's response and unpopularity.

Impact of the Second World War:
Lend-Lease, economic recovery, social developments for African Americans and women.

Racial tension and the Civil Rights campaign, 1950s and 1960s:
Segregation laws and racial prejudice, Martin Luther King, Malcolm X, Civil Rights Acts of the 1960s.



Colonisation of Africa in the 19th and 20th centuries:
Why there was a scramble for Africa? The ways in which Britain came to acquire different countries in Africa and the reasons for this.

Colonisation of India:
A detailed study into British conquest of India and the causes, developments, and impact of this for India and Britain.

The Plantagenets:
How England survived invasion and now attempted to gain territory in France. How the Angevin Empire was created but also lost.

The loss of the Empire:
The impact of the World Wars, the emergence of new ideas, the dominance of the USA and the USSR.

Migrations to and from Britain: 16th-18th centuries:
Why the Huguenots migrated to Britain, the Ulster Plantations, Highland Clearances. Why they occurred and their impact.

Tudor and Stuart Britain:
How Britain explored westwards to The Americas in search of trade, the role of the slave trade and Hawkins' role in this, and the search for trade routes.

Norman Conquest:
Why 1066 was a problematic year for the Crown, why William of Normandy claimed the throne and the impact of the Norman invasion on British identity.

BC: Elizabethan England, 1568-1603

Year 10

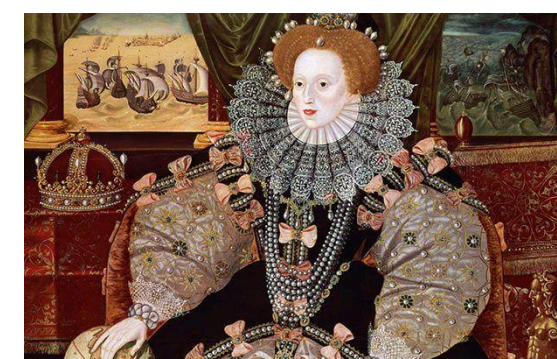
Elizabeth and her government:
The problems that Elizabeth had upon her accession to the throne and how she used her government to manage these problems.

Elizabeth and her suitors:
The options of marriage that Elizabeth had and why she chose to remain single.

Elizabeth's relationship with Spain:
The turbulent relationship with Spain and Phillip II, the role that The Spanish Netherlands and Drake played in increasing tensions with Spain, why the Spanish Armada set sail, why Elizabeth succeeded in defeating it and the impact of this.

AC: Migrations, empires and the people, c790-present

Historic Environment (TBC every year):
AQA will provide an historic place of interest in Elizabethan England which will form the basis of this unit and the 16-mark exam question that will accompany it.



Exam specification:



Should this QR code not work please click [here](#) to view the relevant specification.

Elizabeth and religion:
The problems that Elizabeth had with religion and how she attempted to create a 'middle way' between Protestants and Catholics.

Threats to Elizabeth:
The Puritan and Catholic threats from within and outside the country and how Elizabeth created new laws because of these.

Elizabethan society:
The changes to Elizabethan society and why this era was the 'Golden Age'. The rise of the gentry, changing fashion, education, portraits, architecture, theatre, and exploration.